

## E-Z-Click™ Injection System

The E-Z-Click injection system is comprised of a specially designed fitting and ports that take the mess out of your repair project while allowing you to work faster. The E-Z-Click injection fitting installs onto the end of the Optimix® mixing nozzle and clicks onto the E-Z-Click™ ports during injection.

### Key Features

- Positive connection eliminates messy leakage, minimising waste and clean-up.
- No drilling of ports: E-Z-Click ports perform while pasted to the surface of the concrete. No drilling required for most applications (use EIPX-EZ-RP20 when drilling is required).
- Disconnect the fitting from the E-Z-Click port and the epoxy stops flowing, no leaky mess.
- After injecting, pull the head of the E-Z-Click port out to close it and prevent leakage.
- One person can work faster without having to hold the tube on the port.

Model No.	Description	Pack Qty	Packs per Ctn
EIPX-EZ-RP20	E-Z-Click™ Corner mount/ drilled-in injection port	20	5
EIP-EZA	E-Z-Click™ Flush mount injection port	100	—
EIF-EZ	E-Z-Click™ Injection fitting tube 300mm, Suits E-Z-Click ports	1	10
EIP-EZAKT	E-Z-Click™ Flush mount injection port kit— 20 Ports and 1 Injection fitting	20+1	5



**EIPX-EZ-RP20**  
Corner mount/  
drilled-in port



**EIP-EZA**  
Flush mount port



**EIF-EZ**  
Injection fitting



**EIP-EZAKT**  
Injection port kit

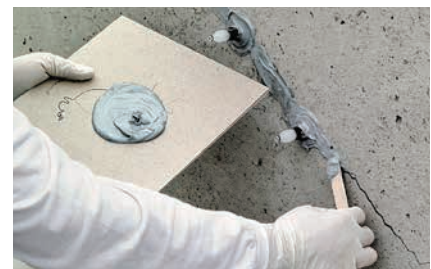
## Paste-over Material

CIP-LO is a low-odour, fast-curing epoxy paste-over used to seal cracks and secure injection ports at the surface of concrete substrates prior to implementing an epoxy or urethane foam injection repair. When properly mixed, the product will be a uniform grey colour. CIP-LO sets up rigid. When the crack repair is complete, the paste-over may be left in place or else ground or chiselled off the concrete substrate.

### Key Features

- 1:1 two-component, high-solids, epoxy-amine based adhesive
- Mixed material is a grey colour
- Low-odour formulation
- Gel time: 6 minutes at 22°C, 28 minutes at 4°C
- Cure times: 75 minutes at 22°C, 2 hours at 15°C and 4–5 hours at 4°C
- Shelf life of two years from the date of manufacture
- Volatile organic compound (VOC): 4 g/L
- Manufactured in the USA using global materials

Model No.	Description	Pack Qty	Ctn Qty
CIPLO22	Low-odour crack-injection paste-over, 650 ml cartridge (EMN22i mixing nozzle sold separately)	1	10



**CIPLO22**



**ETR16**

ETR is ideal for pasting over the surface of cracks and attaching ports for pressure injection. The non-sag paste consistency enables paste-up on horizontal, vertical and overhead applications. Fast cure time means shorter time between paste-over and injection. Packaged as a kit in separate 236 ml canisters which are mixed manually to yield 473 ml of epoxy. Also ideal for small concrete repairs and miscellaneous patching. Each kit contains enough material to cover approximately 2.4 linear metres of cracks.

Model No.	Description	Pack Qty	Packs per Ctn
ETR16	Epoxy paste-over kit, contains (1) 236 ml Resin and (1) 236 ml Hardener	1	4

## Cure Schedule

Base Material Temp. (°C)	Cure Time (hours)	
	CIPLO22	ETR16
4	5	24
16	2	2
22	1.25	—
27	—	1
38	—	1