

Drop-In Internally Threaded Anchor

Drop-in anchors are internally threaded, deformation controlled expansion anchors with a pre-assembled expander plug, suitable for flush mount applications in solid base materials. The anchor is set by driving the expansion plug towards the bottom of the anchor using the setting tool.

The Lipped Drop-In (DIAL) features a lip at the top of the anchor body that keeps the top of the anchor flush with the concrete. This eliminates the need for precisely drilled hole depths and allows for easier flush installation, consistent embedment and uniform rod lengths.

Applications

- Flush-mount applications in solid base materials.

Base Material

- Concrete
- Masonry

Approvals

- The Drop-In anchor has been tested in accordance with *ASTM E488 Standard Test Methods for Strength of Anchors in Concrete and Masonry Elements*.

Finish

- Carbon Steel, Zinc Plated

Contact [Simpson Strong-Tie](#) for load values



DIA

Drop-In — Does not include setting tool

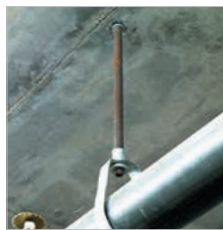
DIAL

Lipped Drop-In — Includes setting tool



DIAS

Drop-In Setting Tool



Drop-In Installation

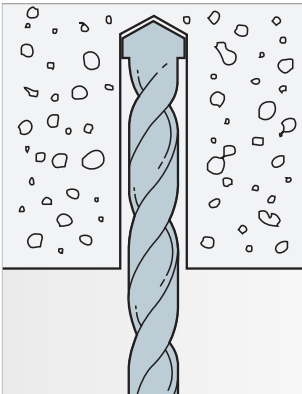


Holes in steel fixtures to be mounted should match the diameter range specified in the table on page 84.

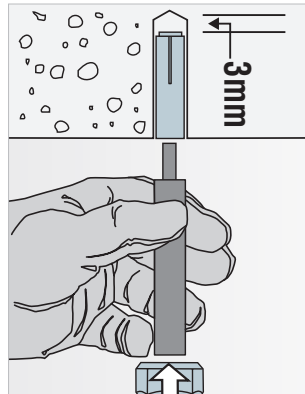
CAUTION: Oversized holes will make it difficult to set the anchor and will reduce the anchor's load capacity.

The load tables list values based upon results from the most recent testing and may not reflect those in current code reports. Where code jurisdictions apply, consult the current reports for applicable load values.

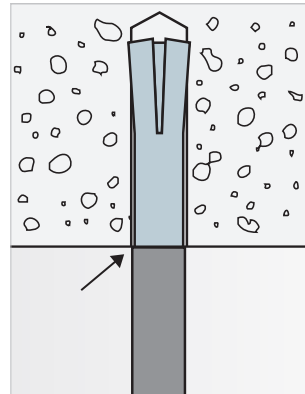
Installation Sequence



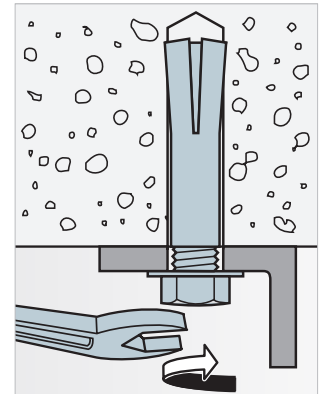
- 1. Drill**
Drill a hole in the base material using the appropriate diameter carbide drill bit as specified in the table.
Drill the hole to the specified embedment depth plus 3–5 mm for flush mounting.
Blow the hole clean using compressed air.
Overhead installations need not be blown clean.



- 2. Insert**
Insert designated anchor into hole. Tap with hammer until flush against surface.



- 3. Expand**
Using the designated drop-in setting tool (DIAST), drive expander plug toward the bottom of the anchor until shoulder of setting tool makes contact with the top of the anchor.



- 4.** Minimum thread engagement should be equal to the nominal diameter of the threaded insert.

Drop-In Product Availability

Model No.	Setting Tool Model No.	Rod Size	Drill Bit Dia. (mm)	Anchor Length (mm)	Thread Length	Box Qty	Carton Qty
DIA06	DIAS06	M6	8	25	10	100	500
DIA08	DIAS08	M8	10	30	13	100	500
DIA10	DIAS10	M10	12	40	16	100	500
DIAL1030	(Included)	M10	12	30	11	100	500
DIA12	DIAS12	M12	16	50	21	50	200
DIA16	DIAS16	M16	20	65	30	25	100

Drop-In Setting Tool Product Availability

Model No.	Use With	Box Qty	Carton Qty
DIAS06	DIA06	10	40
DIAS08	DIA08	10	40
DIAS10	DIA10	10	40
DIAS12	DIA12	10	20
DIAS16	DIA16	5	20